

# ExfordWATERS

LIFE ON THE RIVERBANK



## Package



## WESTLAKE 20

# \$478,700

Lot 439

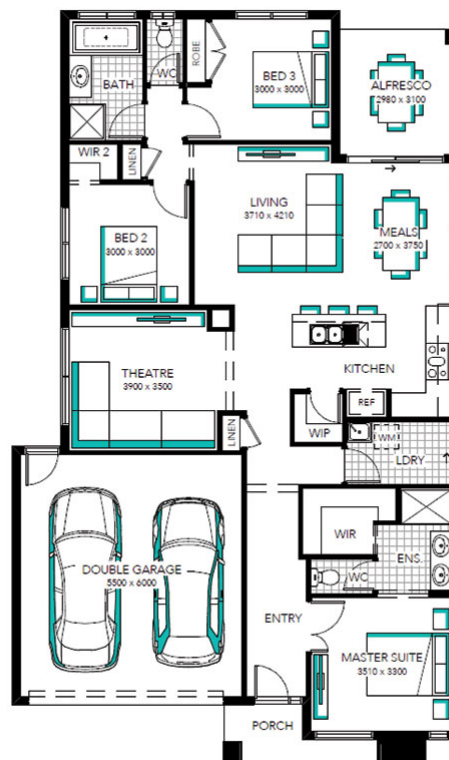
Area: 402m<sup>2</sup>

Frontage: 12.51m

3 BED 2 BATH 2 CAR

### Inclusions

- FIXED PRICE SITE COSTS AND CONNECTIONS
- DEVELOPER AND COUNCIL REQUIREMENTS
- ONLY 2K DEPOSIT UNTIL SLAB STAGE<sup>SM</sup>
- FLOORING THROUGHOUT
- 20MM CAESARSTONE BENCHTOP WITH 16MM SHADOWLINE TO KITCHEN
- GLASS SPLASH BACK TO KITCHEN
- STAINLESS STEEL DISHWASHER
- LAMINATE LAUNDRY CABINETRY AND STAINLESS STEEL TROUGH
- WHITE LED DOWNLIGHTS TO ENTRY AND LIVING AREAS
- ADDITIONAL DOUBLE POWER POINTS TO THE HOME
- ADDITIONAL TELEVISION POINT/S
- TOWEL RAIL OR RING AND TOILET ROLL HOLDERS
- 6 STAR ENERGY RATING



[EXFORDWATERS.COM.AU](http://EXFORDWATERS.COM.AU)

Call 1800 777 800

THIS PUBLICATION IS FOR INFORMATION PURPOSES ONLY AND IS INTENDED TO BE GENERAL IN NATURE. ALL IMAGES, ILLUSTRATIONS AND RENDERS ARE FOR PRESENTATION PURPOSES, ARE NOT ACTUAL IMAGES OF THE DEVELOPMENT AND ARE INTENDED TO BE INDICATIVE ONLY. EVERY CARE IS TAKEN TO ENSURE INFORMATION CONTAINED IN THIS PUBLICATION IS ACCURATE AT THE DATE OF PRINTING HOWEVER EXFORD WATERS PTY LTD CANNOT GUARANTEE ITS ACCURACY AFTER THAT TIME. PROSPECTIVE PURCHASERS SHOULD CAREFULLY REVIEW ANY CONTRACT OF SALE, ENDORSED PLANS MAKE THEIR OWN ENQUIRIES AND OBTAIN INDEPENDENT ADVICE BEFORE PROCEEDING. THE LOT SIZES, LAYOUT AND MEANS OF ACCESS MAY CHANGE WITHOUT NOTICE, THE DEVELOPER AND RPM REAL ESTATE GROUP RESERVES THE RIGHT TO WITHDRAW OR ALTER ANY LOT OR STAGE LAYOUT AT ANY TIME AT ITS ABSOLUTE DISCRETION.