

# ExfordWATERS

LIFE ON THE RIVERBANK



## Package



## FEATHERTOP 23

# \$500,340

Lot 841

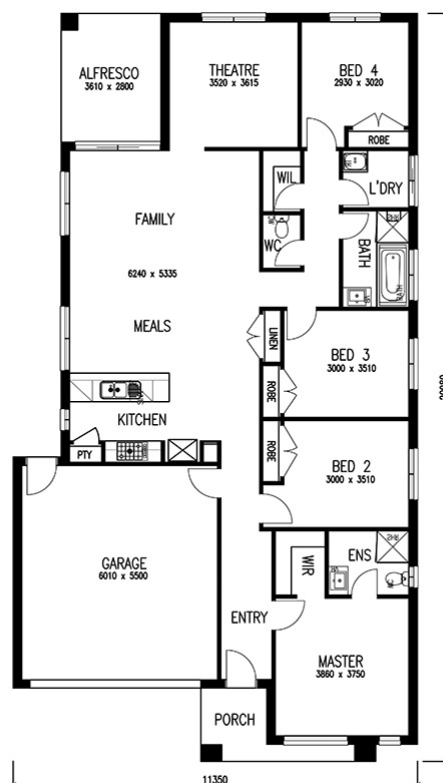
Area: 482m<sup>2</sup>

Frontage: 12.7m

4 BED 2 BATH 2 CAR

### Inclusions

- 2590mm High Ceilings
- 900mm Kitchen appliances
- 20mm Stone Benchtops
- Holland blinds throughout
- Carpet to all Bedrooms & Second-Living area
- Timber look laminate flooring throughout except wet areas & bedrooms
- Ceramic Tiles to all Wet areas
- LED Downlights throughout
- Colour on Driveway up to 30m<sup>2</sup>
- Locks to openable windows
- Panel lift Garage Door with two remotes
- Featured Rendered Facade
- Split-System cooling to family area
- Capped cold water point to ref. space
- TV-Antenna & Letterbox
- Wall mounted Clothesline
- Fixed Site Costs up to H2 class slab



[EXFORDWATERS.COM.AU](http://EXFORDWATERS.COM.AU)

Call 1800 777 800

THIS PUBLICATION IS FOR INFORMATION PURPOSES ONLY AND IS INTENDED TO BE GENERAL IN NATURE. ALL IMAGES, ILLUSTRATIONS AND RENDERS ARE FOR PRESENTATION PURPOSES, ARE NOT ACTUAL IMAGES OF THE DEVELOPMENT AND ARE INTENDED TO BE INDICATIVE ONLY. EVERY CARE IS TAKEN TO ENSURE INFORMATION CONTAINED IN THIS PUBLICATION IS ACCURATE AT THE DATE OF PRINTING HOWEVER EXFORD WATERS PTY LTD CANNOT GUARANTEE ITS ACCURACY AFTER THAT TIME. PROSPECTIVE PURCHASERS SHOULD CAREFULLY REVIEW ANY CONTRACT OF SALE, ENDORSED PLANS MAKE THEIR OWN ENQUIRIES AND OBTAIN INDEPENDENT ADVICE BEFORE PROCEEDING. THE LOT SIZES, LAYOUT AND MEANS OF ACCESS MAY CHANGE WITHOUT NOTICE, THE DEVELOPER AND RPM REAL ESTATE GROUP RESERVES THE RIGHT TO WITHDRAW OR ALTER ANY LOT OR STAGE LAYOUT AT ANY TIME AT ITS ABSOLUTE DISCRETION.