

ExfordWATERS

LIFE ON THE RIVERBANK



Package



HIGHBURY 26

\$554,000

Lot 902

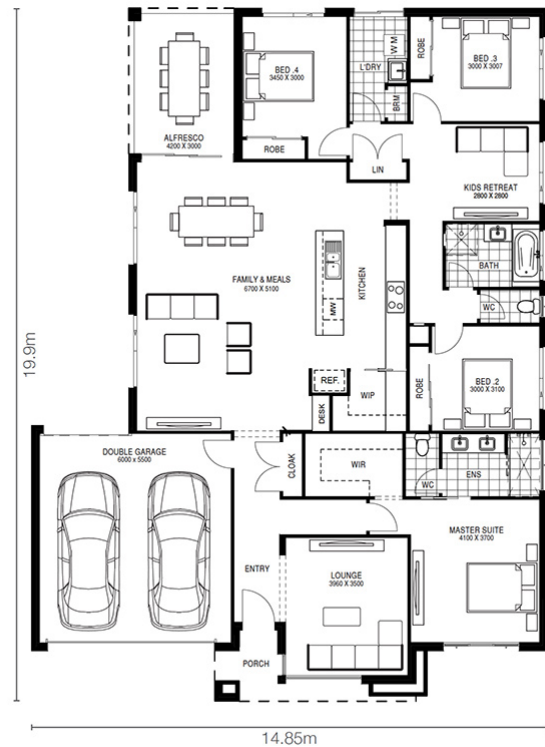
Area: 512m²

Frontage: 16m

4 BED 2 BATH 2 CAR

Inclusions

- Fixed Price Turnkey House Package
- Fixed site costs & connections (as per standard inclusions)
- Flexible floor plans with a range of facade options
- 2590 Ceilings
- Brick infill's above windows
- Coloured concrete driveway, porch, landscaping & 900mm concrete path around house (as per standard inclusions)
- Letterbox & clothesline
- Remote control panel lift garage door
- Half share fencing
- LED downlights throughout the entire home
- Stone bench top to Kitchen, Ensuite & Bathroom
- 900mm upright oven and cook top with canopy rangehood
- Ducted heating & split system cooling
- Water point for refrigerator
- Stainless steel Dishwasher
- Overhead cupboards in kitchen
- Niches to Ensuite & Bathroom shower
- Quality floor covering throughout



Size may vary dependant on facade. Refer to working drawings for complete dimensions.

EXFORDWATERS.COM.AU

Call 1800 777 800

THIS PUBLICATION IS FOR INFORMATION PURPOSES ONLY AND IS INTENDED TO BE GENERAL IN NATURE. ALL IMAGES, ILLUSTRATIONS AND RENDERERS ARE FOR PRESENTATION PURPOSES, ARE NOT ACTUAL IMAGES OF THE DEVELOPMENT AND ARE INTENDED TO BE INDICATIVE ONLY. EVERY CARE IS TAKEN TO ENSURE INFORMATION CONTAINED IN THIS PUBLICATION IS ACCURATE AT THE DATE OF PRINTING HOWEVER EXFORD WATERS PTY LTD CANNOT GUARANTEE ITS ACCURACY AFTER THAT TIME. PROSPECTIVE PURCHASERS SHOULD CAREFULLY REVIEW ANY CONTRACT OF SALE, ENDORSED PLANS MAKE THEIR OWN ENQUIRIES AND OBTAIN INDEPENDENT ADVICE BEFORE PROCEEDING. THE LOT SIZES, LAYOUT AND MEANS OF ACCESS MAY CHANGE WITHOUT NOTICE, THE DEVELOPER AND RPM REAL ESTATE GROUP RESERVES THE RIGHT TO WITHDRAW OR ALTER ANY LOT OR STAGE LAYOUT AT ANY TIME AT ITS ABSOLUTE DISCRETION.