

# ExfordWATERS

LIFE ON THE RIVERBANK



Package



 **BENTLEY  
HOMES**

## SANFORD 240

**\$502,636**

Lot 871

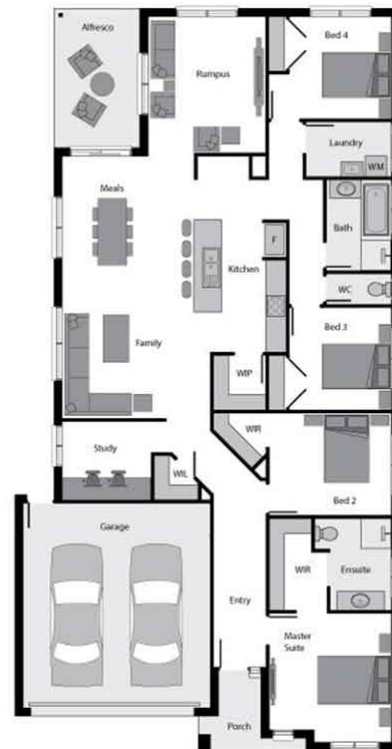
Area: 400m<sup>2</sup>

Frontage: 12.5m

**4** BED **2** BATH **2** CAR

### Inclusions

- Fixed Site Costs\*
- Estate Covenants, Guidelines & Statutory Costs
- Cat.1 carpet with a choice of 8mm timber laminate or ceramic tile flooring
- 900mm appliances
- 20mm Caesarstone to Kitchen
- 900mm Stainless Steel Appliances
- 600mm Stainless Steel Dishwasher
- 20mm Caesarstone to Kitchen
- Gas Heating throughout
- 6 star energy rating\*in any orientation
- Alfresco dining
- Coloured concrete to driveway and porch to 36m
- Future pricing matrix included for untitled land



[EXFORDWATERS.COM.AU](http://EXFORDWATERS.COM.AU)

Call 1800 777 800 

THIS PUBLICATION IS FOR INFORMATION PURPOSES ONLY AND IS INTENDED TO BE GENERAL IN NATURE. ALL IMAGES, ILLUSTRATIONS AND RENDERS ARE FOR PRESENTATION PURPOSES, ARE NOT ACTUAL IMAGES OF THE DEVELOPMENT AND ARE INTENDED TO BE INDICATIVE ONLY. EVERY CARE IS TAKEN TO ENSURE INFORMATION CONTAINED IN THIS PUBLICATION IS ACCURATE AT THE DATE OF PRINTING HOWEVER EXFORD WATERS PTY LTD CANNOT GUARANTEE ITS ACCURACY AFTER THAT TIME. PROSPECTIVE PURCHASERS SHOULD CAREFULLY REVIEW ANY CONTRACT OF SALE, ENDORSED PLANS MAKE THEIR OWN ENQUIRIES AND OBTAIN INDEPENDENT ADVICE BEFORE PROCEEDING. THE LOT SIZES, LAYOUT AND MEANS OF ACCESS MAY CHANGE WITHOUT NOTICE, THE DEVELOPER AND RPM REAL ESTATE GROUP RESERVES THE RIGHT TO WITHDRAW OR ALTER ANY LOT OR STAGE LAYOUT AT ANY TIME AT ITS ABSOLUTE DISCRETION.