

ExfordWATERS

LIFE ON THE RIVERBANK



Package



SOHO

LIVING

ARBORY

\$466,470

Lot 849

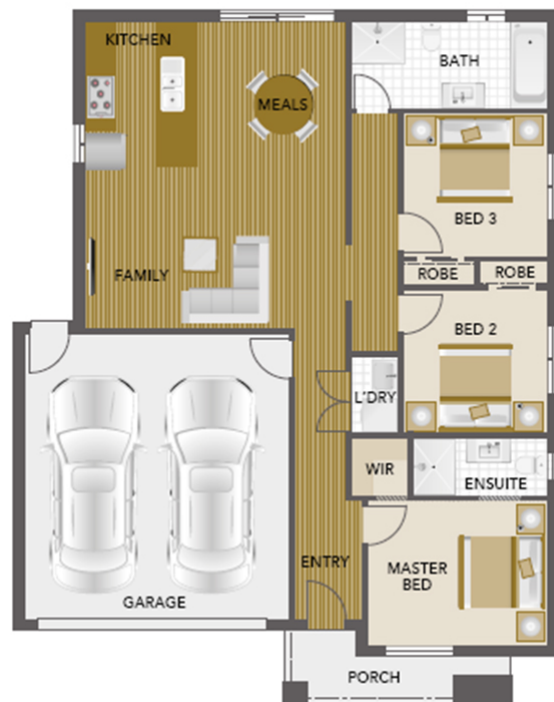
Area: 313m²

Frontage: 12.50m

3 BED 2 BATH 2 CAR

Inclusions

- Stone bench to kitchen, bathroom and ensuite
- 2590 ceiling heights
- 900 mm stainless steel European inspired appliances
- Mirror splash back
- Gas ducted heating
- Split cycle cooling to living
- Fixed Site Cost includes rock removal
- Developer Requirements
- Landscaping to front and rear
- Fencing
- Coloured concrete driveway
- Full turnkey package



EXFORDWATERS.COM.AU

Call 1800 777 800

THIS PUBLICATION IS FOR INFORMATION PURPOSES ONLY AND IS INTENDED TO BE GENERAL IN NATURE. ALL IMAGES, ILLUSTRATIONS AND RENDERS ARE FOR PRESENTATION PURPOSES, ARE NOT ACTUAL IMAGES OF THE DEVELOPMENT AND ARE INTENDED TO BE INDICATIVE ONLY. EVERY CARE IS TAKEN TO ENSURE INFORMATION CONTAINED IN THIS PUBLICATION IS ACCURATE AT THE DATE OF PRINTING HOWEVER EXFORD WATERS PTY LTD CANNOT GUARANTEE ITS ACCURACY AFTER THAT TIME. PROSPECTIVE PURCHASERS SHOULD CAREFULLY REVIEW ANY CONTRACT OF SALE, ENDORSED PLANS MAKE THEIR OWN ENQUIRIES AND OBTAIN INDEPENDENT ADVICE BEFORE PROCEEDING. THE LOT SIZES, LAYOUT AND MEANS OF ACCESS MAY CHANGE WITHOUT NOTICE, THE DEVELOPER AND RPM REAL ESTATE GROUP RESERVES THE RIGHT TO WITHDRAW OR ALTER ANY LOT OR STAGE LAYOUT AT ANY TIME AT ITS ABSOLUTE DISCRETION.