

# ExfordWATERS

LIFE ON THE RIVERBANK



Package



JEREZ 225

**\$512,694**

Lot 838

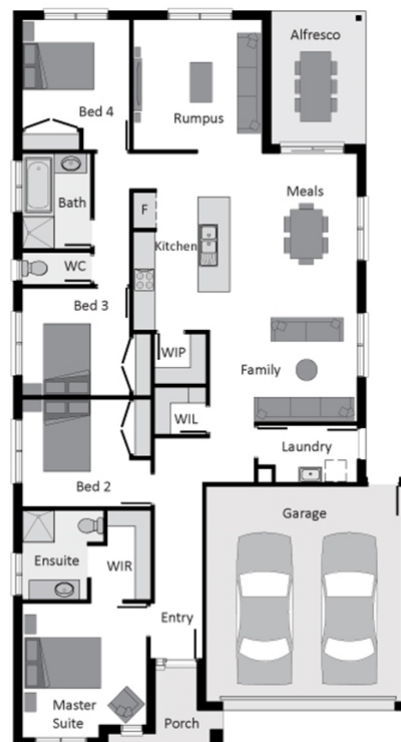
Area: 448m<sup>2</sup>

Frontage: 14m

4 BED 2 BATH 2 CAR

### Inclusions

- Fixed Site Costs
- 20mm Modern Stone to Kitchen, Bath & Ensuite
- 900mm Appliances & Dishwasher
- Evaporative Cooling & Ducted Heating
- Flyscreens and window locks to all openable windows
- 2590mm ceiling height throughout
- Cat.1 carpet with a choice of 8mm timber laminate or ceramic tile flooring
- COLORBOND Sectional panel lift Garage door with 3 remotes, Brick Infills over garage & windows
- 6 star energy rating\*in any orientation
- Estate Covenants, Guidelines & Statutory Costs



[EXFORDWATERS.COM.AU](http://EXFORDWATERS.COM.AU)

Call 1800 777 800

THIS PUBLICATION IS FOR INFORMATION PURPOSES ONLY AND IS INTENDED TO BE GENERAL IN NATURE. ALL IMAGES, ILLUSTRATIONS AND RENDERS ARE FOR PRESENTATION PURPOSES, ARE NOT ACTUAL IMAGES OF THE DEVELOPMENT AND ARE INTENDED TO BE INDICATIVE ONLY. EVERY CARE IS TAKEN TO ENSURE INFORMATION CONTAINED IN THIS PUBLICATION IS ACCURATE AT THE DATE OF PRINTING HOWEVER EXFORD WATERS PTY LTD CANNOT GUARANTEE ITS ACCURACY AFTER THAT TIME. PROSPECTIVE PURCHASERS SHOULD CAREFULLY REVIEW ANY CONTRACT OF SALE, ENDORSED PLANS MAKE THEIR OWN ENQUIRIES AND OBTAIN INDEPENDENT ADVICE BEFORE PROCEEDING. THE LOT SIZES, LAYOUT AND MEANS OF ACCESS MAY CHANGE WITHOUT NOTICE, THE DEVELOPER AND RPM REAL ESTATE GROUP RESERVES THE RIGHT TO WITHDRAW OR ALTER ANY LOT OR STAGE LAYOUT AT ANY TIME AT ITS ABSOLUTE DISCRETION.