

# ExfordWATERS

LIFE ON THE RIVERBANK



## Package



### LENOX 2414

## \$507,661

Lot 802

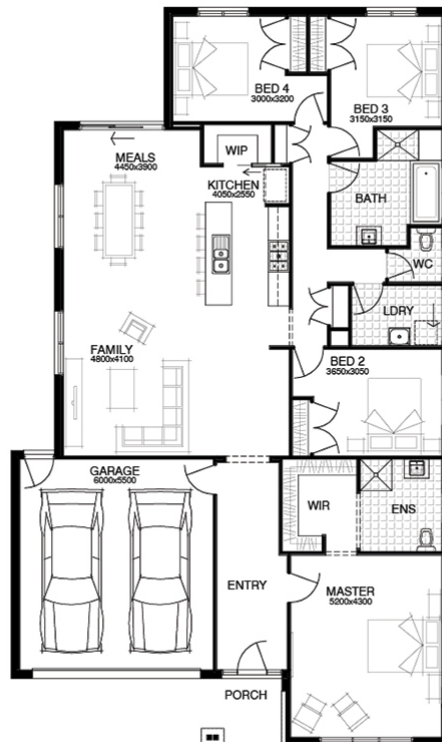
Area: 392m<sup>2</sup>

Frontage: 14m

4 BED 2 BATH 2 CAR

#### Inclusions

- DEVELOPER & COUNCIL REQS
- WELLNESS - DARWIN ESSENTIALS PACK
- PART A & B TERMITE PROTECTION
- 450MM EAVES TO FACADE
- SECTIONAL LIFT GARAGE DOOR WITH REMOTE
- KEYED WINDOW LOCKS TO ALL OPENABLE WINDOWS
- TECHNIKA 900MM STAINLESS STEEL APPLIANCES
- TILED SHOWER BASES



[EXFORDWATERS.COM.AU](http://EXFORDWATERS.COM.AU)

Call 1800 777 800

THIS PUBLICATION IS FOR INFORMATION PURPOSES ONLY AND IS INTENDED TO BE GENERAL IN NATURE. ALL IMAGES, ILLUSTRATIONS AND RENDERERS ARE FOR PRESENTATION PURPOSES, ARE NOT ACTUAL IMAGES OF THE DEVELOPMENT AND ARE INTENDED TO BE INDICATIVE ONLY. EVERY CARE IS TAKEN TO ENSURE INFORMATION CONTAINED IN THIS PUBLICATION IS ACCURATE AT THE DATE OF PRINTING HOWEVER EXFORD WATERS PTY LTD CANNOT GUARANTEE ITS ACCURACY AFTER THAT TIME. PROSPECTIVE PURCHASERS SHOULD CAREFULLY REVIEW ANY CONTRACT OF SALE, ENDORSED PLANS MAKE THEIR OWN ENQUIRIES AND OBTAIN INDEPENDENT ADVICE BEFORE PROCEEDING. THE LOT SIZES, LAYOUT AND MEANS OF ACCESS MAY CHANGE WITHOUT NOTICE, THE DEVELOPER AND RPM REAL ESTATE GROUP RESERVES THE RIGHT TO WITHDRAW OR ALTER ANY LOT OR STAGE LAYOUT AT ANY TIME AT ITS ABSOLUTE DISCRETION.