

ExfordWATERS

LIFE ON THE RIVERBANK



Package



MIMOSA
HOMES *happily ever after...*

BELLA 184

\$495,390

Lot 822

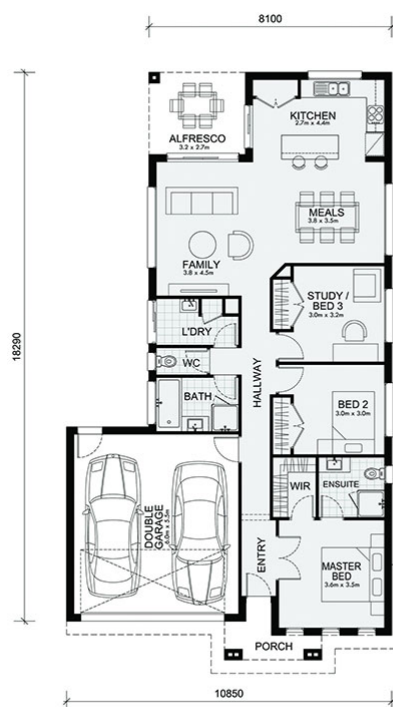
Area: 472m²

Frontage: 14.15m

3 BED **2** BATH **2** CAR

Inclusions

- Mimosa Homes Added Value Includes:
- Engineered up to Class Slab
- Council & OH&S Requirements (Excludes town planning and council dispensation fees)
- 25mPa Concrete for engineered waffle pod slab (Excludes alfresco & Porch)
- Price upfront before deposit (Inclusive of site costs and connections with slab)
- Stained Timber Front Entry Door
- Quality floor coverings throughout entire home
- Overhead cupboards & wine rack (Above fridge cavity space)
- Stainless steel dishwasher & Microwave with trim kit
- Downlights to all living areas
- 3 coat paint system
- Home sweet new home promo included in price



EXFORDWATERS.COM.AU

Call 1800 777 800 **RPM** REAL ESTATE GROUP

THIS PUBLICATION IS FOR INFORMATION PURPOSES ONLY AND IS INTENDED TO BE GENERAL IN NATURE. ALL IMAGES, ILLUSTRATIONS AND RENDERS ARE FOR PRESENTATION PURPOSES, ARE NOT ACTUAL IMAGES OF THE DEVELOPMENT AND ARE INTENDED TO BE INDICATIVE ONLY. EVERY CARE IS TAKEN TO ENSURE INFORMATION CONTAINED IN THIS PUBLICATION IS ACCURATE AT THE DATE OF PRINTING HOWEVER EXFORD WATERS PTY LTD CANNOT GUARANTEE ITS ACCURACY AFTER THAT TIME. PROSPECTIVE PURCHASERS SHOULD CAREFULLY REVIEW ANY CONTRACT OF SALE, ENDORSED PLANS MAKE THEIR OWN ENQUIRIES AND OBTAIN INDEPENDENT ADVICE BEFORE PROCEEDING. THE LOT SIZES, LAYOUT AND MEANS OF ACCESS MAY CHANGE WITHOUT NOTICE, THE DEVELOPER AND RPM REAL ESTATE GROUP RESERVES THE RIGHT TO WITHDRAW OR ALTER ANY LOT OR STAGE LAYOUT AT ANY TIME AT ITS ABSOLUTE DISCRETION.