

ExfordWATERS

LIFE ON THE RIVERBANK



Package



ILLAWARRA 39

\$665,900

Lot 307

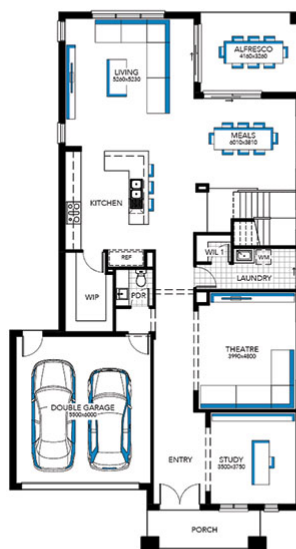
Area: 512m²

Frontage: 16m

4 BED 2 BATH 2 CAR

Inclusions

- FIXED PRICE SITE COSTS AND CONNECTIONS
- DEVELOPER AND COUNCIL REQUIREMENTS
- FLOORING THROUGHOUT
- EVAPORATIVE COOLING
- YOUR CHOICE OF FACADE FROM ENTIRE RANGE AT NO EXTRA COST
- DELUXE ELECTRICAL PACK
- 20MM CAESARSTONE BENCHTOPS TO KITCHEN
- 20MM CAESARSTONE BENCHTOP TO ENSUITE
- 40MM CAESARSTONE EDGE WITH WATERFALL END PANELS TO ISLAND BENCH (DOUBLE STORIES)
- STAINLESS STEEL DISHWASHER



EXFORDWATERS.COM.AU

Call 1800 777 800

THIS PUBLICATION IS FOR INFORMATION PURPOSES ONLY AND IS INTENDED TO BE GENERAL IN NATURE. ALL IMAGES, ILLUSTRATIONS AND RENDERS ARE FOR PRESENTATION PURPOSES, ARE NOT ACTUAL IMAGES OF THE DEVELOPMENT AND ARE INTENDED TO BE INDICATIVE ONLY. EVERY CARE IS TAKEN TO ENSURE INFORMATION CONTAINED IN THIS PUBLICATION IS ACCURATE AT THE DATE OF PRINTING HOWEVER EXFORD WATERS PTY LTD CANNOT GUARANTEE ITS ACCURACY AFTER THAT TIME. PROSPECTIVE PURCHASERS SHOULD CAREFULLY REVIEW ANY CONTRACT OF SALE, ENDORSED PLANS MAKE THEIR OWN ENQUIRIES AND OBTAIN INDEPENDENT ADVICE BEFORE PROCEEDING. THE LOT SIZES, LAYOUT AND MEANS OF ACCESS MAY CHANGE WITHOUT NOTICE, THE DEVELOPER AND RPM REAL ESTATE GROUP RESERVES THE RIGHT TO WITHDRAW OR ALTER ANY LOT OR STAGE LAYOUT AT ANY TIME AT ITS ABSOLUTE DISCRETION.