

ExfordWATERS

LIFE ON THE RIVERBANK



Package



**dennis
family
homes**

a family building
homes for families™

PEARL 23

\$504,112

Lot 874

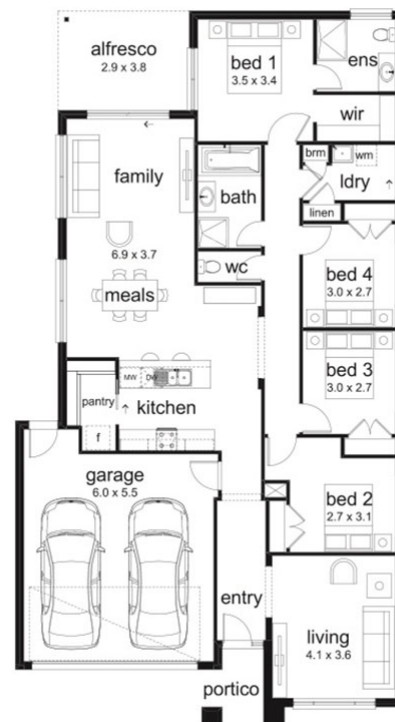
Area: 400m²

Frontage: 12.5m

4 BED 2 BATH 2 CAR

Inclusions

- Aspirations Inclusions
- BAL
- Site Costs Allowance
- Developer/Estate Covenant Requirements
- Recycled Water
- NBN Connection
- 2580mm Ceiling Height
- Double Garage
- Sectional Garage Door
- Flyscreens
- Stainless Steel Appliances
- 900mm Appliances
- Ducted Heating
- Current Promotion



EXFORDWATERS.COM.AU

Call 1800 777 800

THIS PUBLICATION IS FOR INFORMATION PURPOSES ONLY AND IS INTENDED TO BE GENERAL IN NATURE. ALL IMAGES, ILLUSTRATIONS AND RENDERS ARE FOR PRESENTATION PURPOSES, ARE NOT ACTUAL IMAGES OF THE DEVELOPMENT AND ARE INTENDED TO BE INDICATIVE ONLY. EVERY CARE IS TAKEN TO ENSURE INFORMATION CONTAINED IN THIS PUBLICATION IS ACCURATE AT THE DATE OF PRINTING HOWEVER EXFORD WATERS PTY LTD CANNOT GUARANTEE ITS ACCURACY AFTER THAT TIME. PROSPECTIVE PURCHASERS SHOULD CAREFULLY REVIEW ANY CONTRACT OF SALE, ENDORSED PLANS MAKE THEIR OWN ENQUIRIES AND OBTAIN INDEPENDENT ADVICE BEFORE PROCEEDING. THE LOT SIZES, LAYOUT AND MEANS OF ACCESS MAY CHANGE WITHOUT NOTICE, THE DEVELOPER AND RPM REAL ESTATE GROUP RESERVES THE RIGHT TO WITHDRAW OR ALTER ANY LOT OR STAGE LAYOUT AT ANY TIME AT ITS ABSOLUTE DISCRETION.