

ExfordWATERS

LIFE ON THE RIVERBANK



Package



G.J. Gardner. **HOMES**

BRIDGEWATER 186

\$508,421

Lot 875

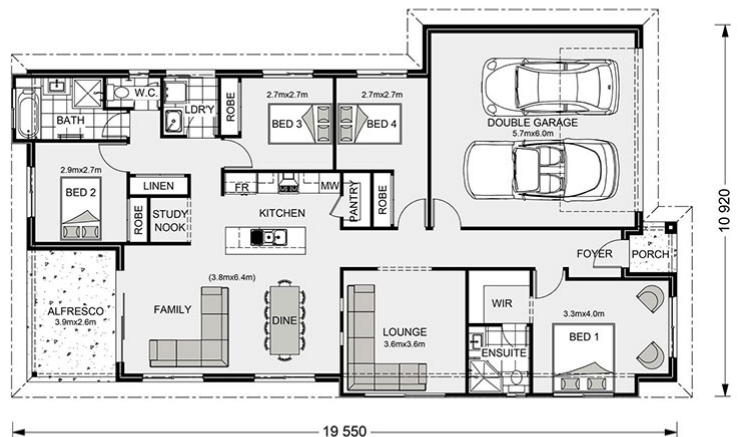
Area: 448m²

Frontage: 14m

4 BED 2 BATH 2 CAR

Inclusions

- Colourbond Roof with 450 eaves or as indicated on plan
- Reece Fixtures & Fittings with Westinghouse Appliances
- Flooring - Tiles to wet areas, carpet to bedrooms & Laminated flooring
- Ducted Heating & Rinnai Solar Hot Water System
- Remote Panel Lift Door to Garage
- Fixed Site Costs



EXFORDWATERS.COM.AU

Call 1800 777 800 **RPM**
REAL ESTATE GROUP

THIS PUBLICATION IS FOR INFORMATION PURPOSES ONLY AND IS INTENDED TO BE GENERAL IN NATURE. ALL IMAGES, ILLUSTRATIONS AND RENDERS ARE FOR PRESENTATION PURPOSES, ARE NOT ACTUAL IMAGES OF THE DEVELOPMENT AND ARE INTENDED TO BE INDICATIVE ONLY. EVERY CARE IS TAKEN TO ENSURE INFORMATION CONTAINED IN THIS PUBLICATION IS ACCURATE AT THE DATE OF PRINTING HOWEVER EXFORD WATERS PTY LTD CANNOT GUARANTEE ITS ACCURACY AFTER THAT TIME. PROSPECTIVE PURCHASERS SHOULD CAREFULLY REVIEW ANY CONTRACT OF SALE, ENDORSED PLANS MAKE THEIR OWN ENQUIRIES AND OBTAIN INDEPENDENT ADVICE BEFORE PROCEEDING. THE LOT SIZES, LAYOUT AND MEANS OF ACCESS MAY CHANGE WITHOUT NOTICE, THE DEVELOPER AND RPM REAL ESTATE GROUP RESERVES THE RIGHT TO WITHDRAW OR ALTER ANY LOT OR STAGE LAYOUT AT ANY TIME AT ITS ABSOLUTE DISCRETION.