

# ExfordWATERS

LIFE ON THE RIVERBANK



Package



**Burbank**   
#noplacelikehome

## PARKVILLE 208

**\$475,670**

Lot 813

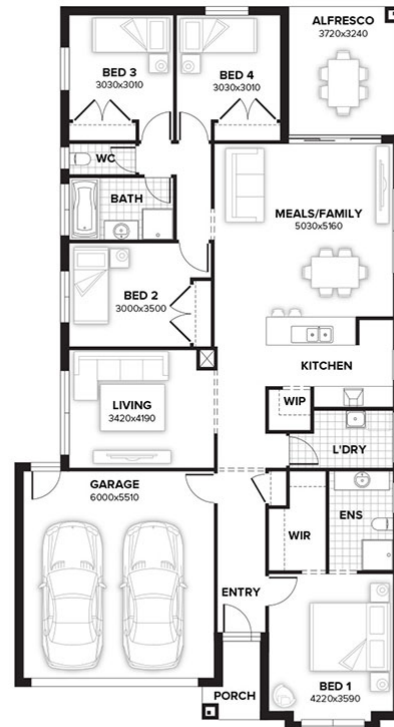
Area: 350m<sup>2</sup>

Frontage: 12.50m

4 BED 2 BATH 2 CAR

### Inclusions

- Fixed Site Costs Including Rock Assurance
- Council and Developer Requirements
- 12 Month Price Freeze With Option To Extend
- Quality Assured With Our 30-Year Structural Guarantee and 15-Month Maintenance Pledge
- Multiple Floorplans and Facade Options Available
- Style Your Home With Expert Interior Designers At Our Edge Selection Studio



[EXFORDWATERS.COM.AU](http://EXFORDWATERS.COM.AU)

Call 1800 777 800 

THIS PUBLICATION IS FOR INFORMATION PURPOSES ONLY AND IS INTENDED TO BE GENERAL IN NATURE. ALL IMAGES, ILLUSTRATIONS AND RENDERS ARE FOR PRESENTATION PURPOSES, ARE NOT ACTUAL IMAGES OF THE DEVELOPMENT AND ARE INTENDED TO BE INDICATIVE ONLY. EVERY CARE IS TAKEN TO ENSURE INFORMATION CONTAINED IN THIS PUBLICATION IS ACCURATE AT THE DATE OF PRINTING HOWEVER EXFORD WATERS PTY LTD CANNOT GUARANTEE ITS ACCURACY AFTER THAT TIME. PROSPECTIVE PURCHASERS SHOULD CAREFULLY REVIEW ANY CONTRACT OF SALE, ENDORSED PLANS MAKE THEIR OWN ENQUIRIES AND OBTAIN INDEPENDENT ADVICE BEFORE PROCEEDING. THE LOT SIZES, LAYOUT AND MEANS OF ACCESS MAY CHANGE WITHOUT NOTICE, THE DEVELOPER AND RPM REAL ESTATE GROUP RESERVES THE RIGHT TO WITHDRAW OR ALTER ANY LOT OR STAGE LAYOUT AT ANY TIME AT ITS ABSOLUTE DISCRETION.