

ExfordWATERS

LIFE ON THE RIVERBANK



Package



CAPITAL 1223A

\$478,670

Lot 809

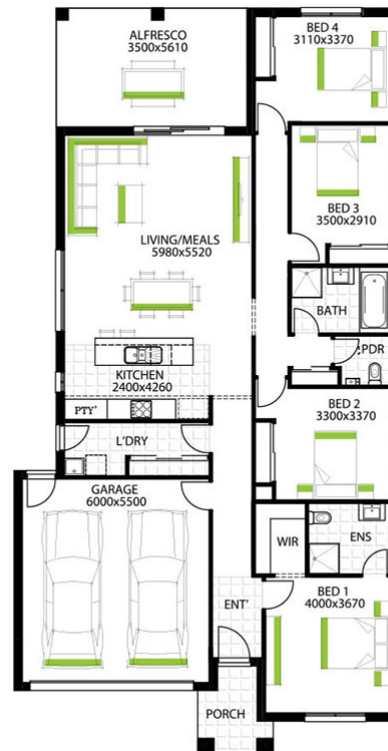
Area: 350m²

Frontage: 12.50m

4 BED 2 BATH 2 CAR

Inclusions

- Fixed site costs, NBN/Opticomm provision & council requirements.
- Stone benchtops to kitchen and overhead cupboards incl. over the fridge
- 900mm stainless steel appliances including dishwasher.
- All flooring coverings: carpet, tiles or timber laminate.
- Concrete driveway & path (Up to 35m²).
- Tiled shower bases, shower rail assembly with semi frameless shower screens.
- Sectional panel lift garage door with 2 remotes.
- Professionally selected exterior & interior colour scheme options.
- Developer guidelines & covenants.



EXFORDWATERS.COM.AU

Call 1800 777 800

THIS PUBLICATION IS FOR INFORMATION PURPOSES ONLY AND IS INTENDED TO BE GENERAL IN NATURE. ALL IMAGES, ILLUSTRATIONS AND RENDERS ARE FOR PRESENTATION PURPOSES, ARE NOT ACTUAL IMAGES OF THE DEVELOPMENT AND ARE INTENDED TO BE INDICATIVE ONLY. EVERY CARE IS TAKEN TO ENSURE INFORMATION CONTAINED IN THIS PUBLICATION IS ACCURATE AT THE DATE OF PRINTING HOWEVER EXFORD WATERS PTY LTD CANNOT GUARANTEE ITS ACCURACY AFTER THAT TIME. PROSPECTIVE PURCHASERS SHOULD CAREFULLY REVIEW ANY CONTRACT OF SALE, ENDORSED PLANS MAKE THEIR OWN ENQUIRIES AND OBTAIN INDEPENDENT ADVICE BEFORE PROCEEDING. THE LOT SIZES, LAYOUT AND MEANS OF ACCESS MAY CHANGE WITHOUT NOTICE, THE DEVELOPER AND RPM REAL ESTATE GROUP RESERVES THE RIGHT TO WITHDRAW OR ALTER ANY LOT OR STAGE LAYOUT AT ANY TIME AT ITS ABSOLUTE DISCRETION.