

ExfordWATERS

LIFE ON THE RIVERBANK



Package



DOMAIN 156

\$404,447

Lot 617

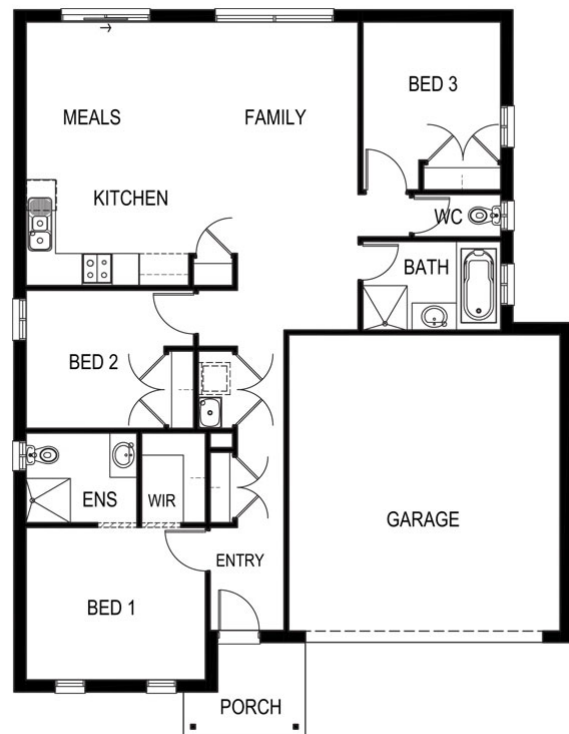
Area: 350m²

Frontage: 12.5m

3 BED 2 BATH 2 CAR

Inclusions

- Carpet and Floor tiles throughout
- Colorbond roof
- Ceramic Cooktop and built in oven
- Reverse cycle split system
- Choice of 5 internal and 5 external colour schemes
- BAL 12.5 included
- Fixed Site Costs
- Developers Guidelines
- 6-star energy rating on BEST orientation
- Smart design to suit compact block sizes



EXFORDWATERS.COM.AU

Call 1800 777 800 

THIS PUBLICATION IS FOR INFORMATION PURPOSES ONLY AND IS INTENDED TO BE GENERAL IN NATURE. ALL IMAGES, ILLUSTRATIONS AND RENDERS ARE FOR PRESENTATION PURPOSES, ARE NOT ACTUAL IMAGES OF THE DEVELOPMENT AND ARE INTENDED TO BE INDICATIVE ONLY. EVERY CARE IS TAKEN TO ENSURE INFORMATION CONTAINED IN THIS PUBLICATION IS ACCURATE AT THE DATE OF PRINTING HOWEVER EXFORD WATERS PTY LTD CANNOT GUARANTEE ITS ACCURACY AFTER THAT TIME. PROSPECTIVE PURCHASERS SHOULD CAREFULLY REVIEW ANY CONTRACT OF SALE, ENDORSED PLANS MAKE THEIR OWN ENQUIRIES AND OBTAIN INDEPENDENT ADVICE BEFORE PROCEEDING. THE LOT SIZES, LAYOUT AND MEANS OF ACCESS MAY CHANGE WITHOUT NOTICE, THE DEVELOPER AND RPM REAL ESTATE GROUP RESERVES THE RIGHT TO WITHDRAW OR ALTER ANY LOT OR STAGE LAYOUT AT ANY TIME AT ITS ABSOLUTE DISCRETION.