

ExfordWATERS

LIFE ON THE RIVERBANK



Package



COLORADO 34

\$605,300

Lot 809

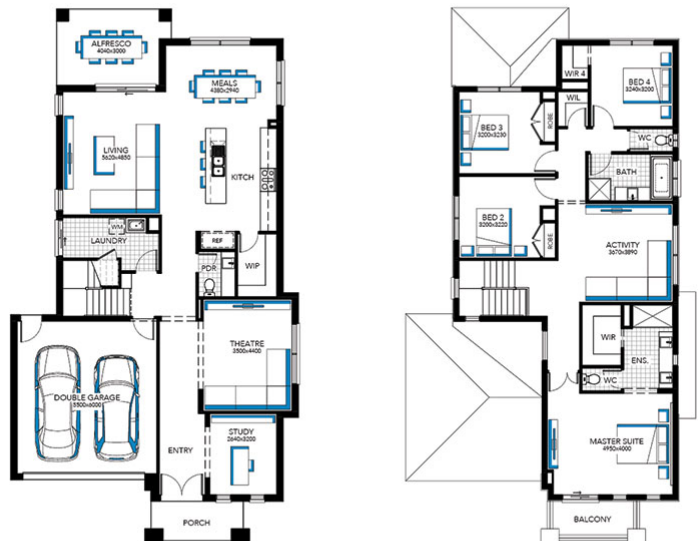
Area: 350m²

Frontage: 12.50m

4 BED 2 BATH 2 CAR

Inclusions

- FIXED PRICE SITE COSTS AND CONNECTIONS
- DEVELOPER AND COUNCIL REQUIREMENTS
- UP TO 2K OFF ALL FACADES
- DOUBLE GLAZING TO WINDOWS
- EVAPORATIVE COOLING SYSTEM
- CERAMIC TILES OR LAMINATE TIMBER AND CARPET
- 20MM CAESARSTONE BENCHTOPS TO KITCHEN, ENSUITE & BATHROOM
- 40MM CAESARSTONE EDGE WITH WATERFALL END PANELS TO ISLAND BENCH (DOUBLE STORES)
- CLEAR GLASS SPLASH BACK
- TECHNIKA STAINLESS STEEL DISHWASHER
- 2110MM HIGH ALUMINIUM ENTERTAIN STACKER DOOR AND/OR ADDITIONAL ALUMINIUM SLIDING DOOR TO ALFRESCO
- FEATURE STAIRCASE BALUSTRADE
- DELUXE ELECTRICAL PACK PLUS ALARM SYSTEM
- COLORCOTE METAL ROOF TO SINGLE STOREY HOMES



EXFORDWATERS.COM.AU

Call 1800 777 800

THIS PUBLICATION IS FOR INFORMATION PURPOSES ONLY AND IS INTENDED TO BE GENERAL IN NATURE. ALL IMAGES, ILLUSTRATIONS AND RENDERS ARE FOR PRESENTATION PURPOSES. ARE NOT ACTUAL IMAGES OF THE DEVELOPMENT AND ARE INTENDED TO BE INDICATIVE ONLY. EVERY CARE IS TAKEN TO ENSURE INFORMATION CONTAINED IN THIS PUBLICATION IS ACCURATE AT THE DATE OF PRINTING HOWEVER EXFORD WATERS PTY LTD CANNOT GUARANTEE ITS ACCURACY AFTER THAT TIME. PROSPECTIVE PURCHASERS SHOULD CAREFULLY REVIEW ANY CONTRACT OF SALE, ENDORSED PLANS MAKE THEIR OWN ENQUIRIES AND OBTAIN INDEPENDENT ADVICE BEFORE PROCEEDING. THE LOT SIZES, LAYOUT AND MEANS OF ACCESS MAY CHANGE WITHOUT NOTICE, THE DEVELOPER AND RPM REAL ESTATE GROUP RESERVES THE RIGHT TO WITHDRAW OR ALTER ANY LOT OR STAGE LAYOUT AT ANY TIME AT ITS ABSOLUTE DISCRETION.